

Cottage 16



Price \$173,000.00
as at 1st November 2008

Living	106.20
Garage	22.80
Patio	10.00
Porch	11.00
Total m2	150.00

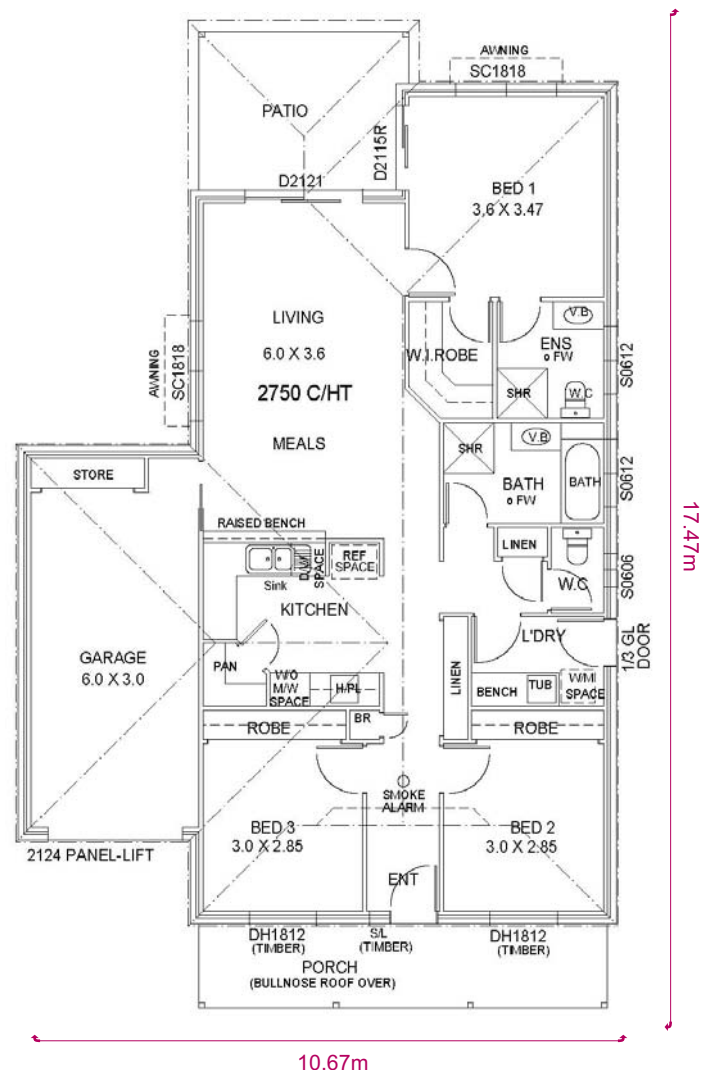
Display Home Open
7 days 10am - 4pm

4 Mossman Parade
Waterford 4133

For enquiries phone
0406 000 661

 **Santo Correnti
Homes Pty Ltd**

Ph: 1300 731 853 Web: www.santocorrentihomes.com.au



Inclusions



- Fixed price contract
- Soil test & contour survey
- Full working drawings
- Engineered slab/footing design (S & M site)
- Council approval & termite protection
- Single or double height bricks
- Colorbond roof with 2.7 ceiling height
- R1.5 batts to ceiling & wall wrap
- Colorbond fascia, gutter & PVC downpipes
- Remote control garage door - 2 handsets
- Timber windows to front elevation (no screens)
- Aluminium windows & sliding doors
- Security screens to windows & doors
- Gallery blinds to windows & verticals to sliding doors
- Timber front door with stained glass
- Variety of internal doors
- Lever door handles
- Colonial, bullnose or splade skirting & architraves
- Overhead cupboards & bulkhead in kitchen
- Blanco stainless oven, hotplate, 60cm canopy & dishwasher
- 1 3/4 stainless steel sink & flickmixer
- Flickmixer tapware to bathrooms
- Polymarble vanity top & laminate cabinet
- 1500mm white bath
- Powdercoated aluminium shower & mirror frames
- Tiles & carpets throughout
- Painting - 3 coat system
- Variety of light fittings & ample powerpoints
- Ceiling fans to bedrooms
- Air-con to main living area
- HWS - Gas
- Built-in-robies - vinyl sliding doors - with designer shelving system
- 5000ltr round tank & connections
- Concrete driveway, porch & patio
- Fully turfed (based on 600m2 block - excludes top soil)
- Wallmount clothesline, TV antenna, letterbox
- BBQ gas point to patio area
- 1800mm timber paling fence (40LM)

 **Santo Correnti
Homes Pty Ltd**

Ph: 1300 731 853 Web: www.santocorrentihomes.com.au