

Coorabelle 30



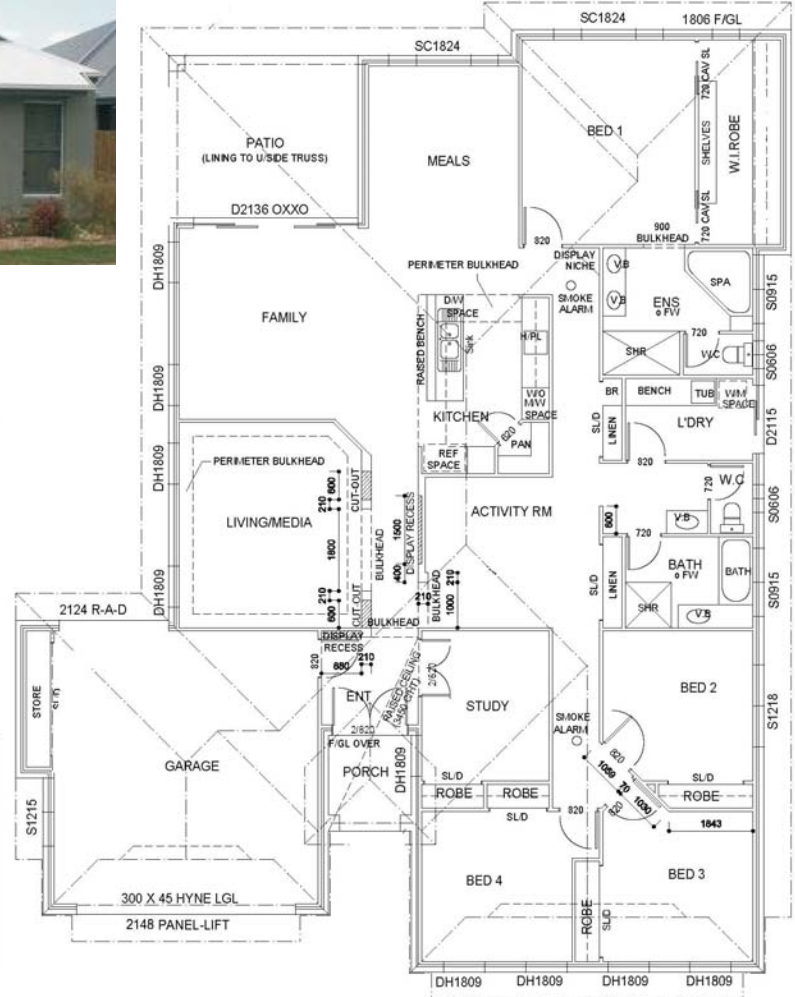
**Display Home Open
7 days 10am - 4pm**

**4 Mossman Parade
Waterford 4133**

**18 Holterman Crescent
Redbank Plains 4301**

**For details phone
0406 000 661**

Living	215.16
Garage	38.71
Porch	6.85
Patio	17.98
Total m2	278.70

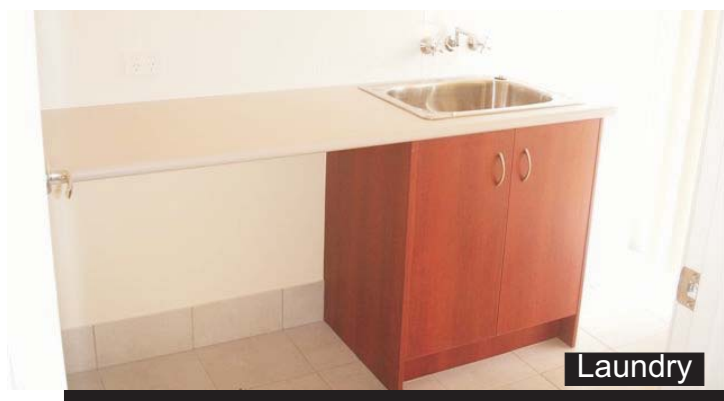
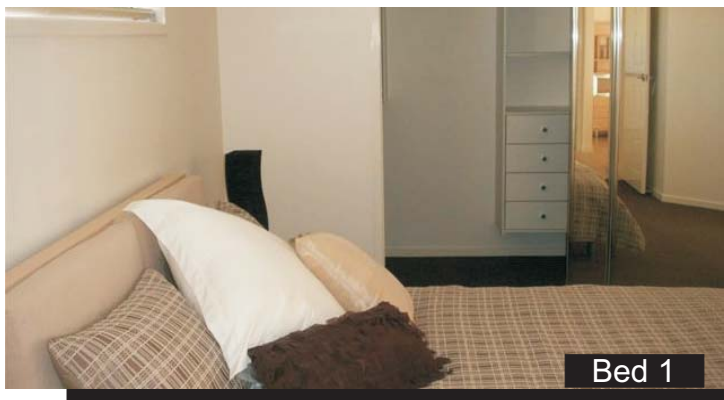
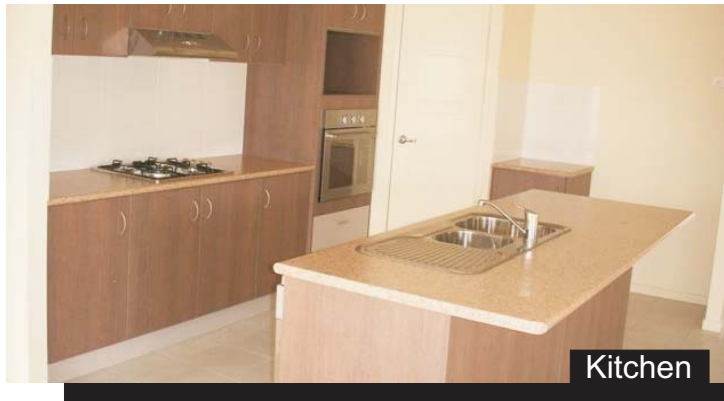


**Price \$250,000.00
As at 1st March 2008**



**Santo Correnti
Homes Pty Ltd**

Inclusions



- Fixed price contract
- Soil test & contour survey
- Full working drawings
- Engineered slab / footing design
- Council approval
- Termite protection
- Single or double height bricks
- Tile / Colorbond roof with insulation
- Colorbond fascia, gutter & downpipes
- Remote control garage - 2 handsets
- Aluminium windows & sliding doors
- Security screens to windows & doors
- Gallery blinds to windows & verticals to sliding doors
- Variety of front & internal doors
- Lever door handles
- Colonial, bullnose or splade skirting & architraves
- Overhead cupboards & bulkhead in kitchen
- Blanco stainless oven, hotplate, 60cm canopy & dishwasher
- 1 3/4 stainless steel sink & flickmixer
- Flickmixer tapware to bathrooms
- Polymarble vanity & laminate cabinet
- 1500mm white bath
- Powdercoated shower frame & mirror
- Tiles & carpets throughout
- Painting - 3 coat system
- Variety of light fittings
- Ample powerpoints
- Ceiling fans to bedrooms
- Air-con to main living area
- HWS - Gas
- Robes - vinyl sliding doors - with designer wardrobe system
- 5000ltr round tank & connections
- Driveway & path to entry
- Fully turfed (based on 600m2 block - excluding top soil)
- Clothesline & letterbox
- BBQ gas point
- 1800mm timber fence (40LM)