

Doyle 18



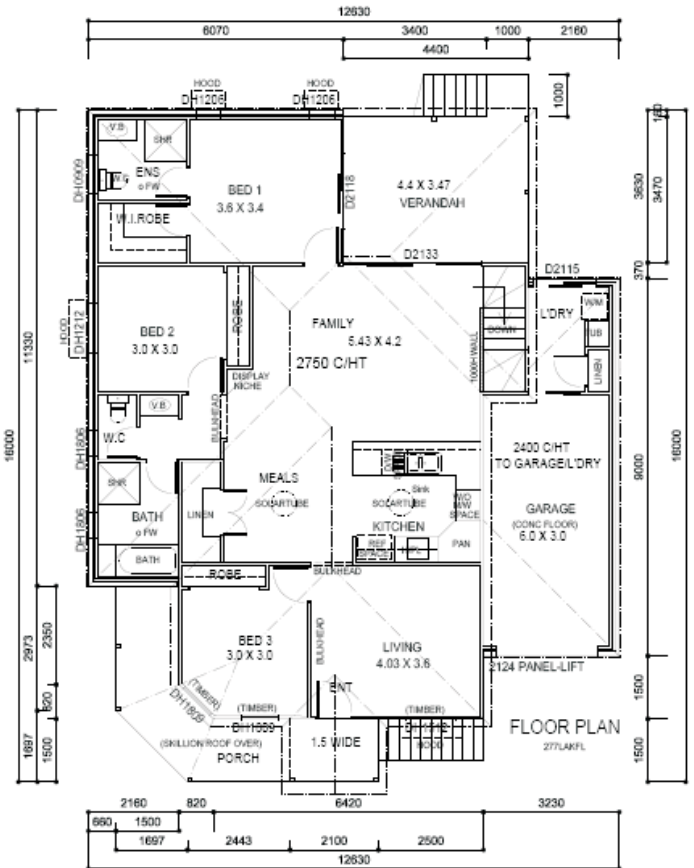
**Display Home Open
7 days 10am - 4pm**

**4 Mossman Parade,
Waterford 4133**

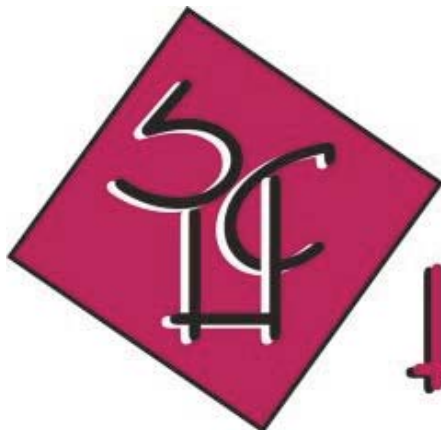
**18 Holterman Crescent,
Redbank Plains 4301**

**For details phone
1300 731 853**

**Price \$227,550.00
as at 1st March 2008**



Living	126.00
Garage	20.00
Porch	13.00
Verandah	16.00
Total m2	175.00



**Santo Correnti
Homes Pty Ltd**

Inclusions



- Fixed price contract
- Soil test & contour survey
- Full working drawings
- Engineered slab / footing design
- Council approval
- Termite protection
- External cladding/2.7 ceilings to upper
- Colorbond roof with insulation
- Colorbond fascia, gutter & downpipes
- Remote control garage - 2 handsets
- Stained timber windows to front (excluding security screens)
- Aluminium windows & sliding doors with security screens to sides & rear
- Gallery blinds to windows & verticals to sliding doors
- Colonial doors
- Lever door handles
- Colonial skirting & architraves
- Overhead cupboards & bulkhead in kitchen
- Blanco stainless oven, hotplate, 60cm canopy & dishwasher
- 1 3/4 stainless steel sink & flickmixer
- Flickmixer tapware to bathrooms
- Polymarble vanity & laminate cabinet
- 1500mm white bath
- Powdercoated shower frame & mirror
- Tiles & carpets throughout
- Painting - 3 coat system
- Variety of light fittings
- Ample powerpoints
- Ceiling fans to bedrooms
- Air-con to main living area
- Gas HWS - Rinnai
- Robes - vinyl sliding doors - with designer wardrobe system
- Driveway & path to entry
- Fully turfed (based on 600m2 block - excluding top soil)
- Clothesline & letterbox
- 5000ltr round water tank & connections
- Gas BBQ Point
- 1800mm timber fence (40lm)